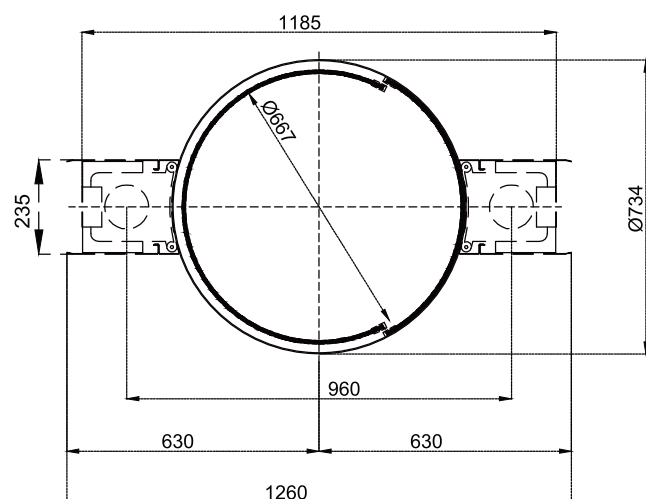
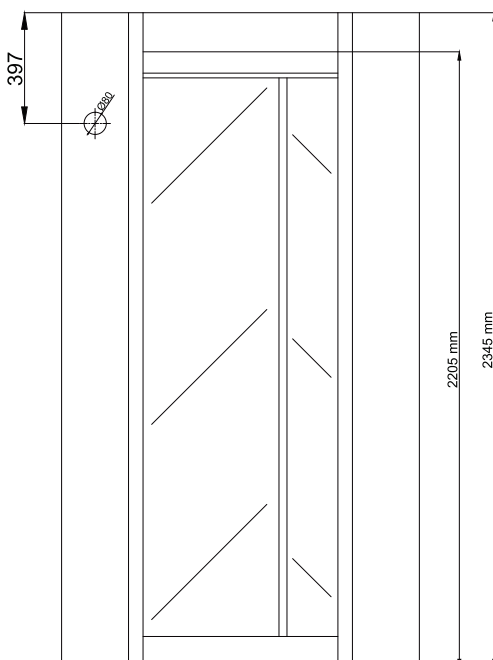


CGG 100



- Power Requirements** : 110/220V. 60/50Hz. AC (± 10) 24V. DC at standby ~14 W. max. ~130 W
- Body Features & Circular Sliding Doors** : Cylindrical shaped, 1,5 mm thick, 304-grade stainless steel.
Exterior-fixed access doors located between the supporting structure and the wall.
Control unit is located above the ceiling panel on top cabinet.
Interior-motor-driven rotating cylindrical cabinet provides control by directional access.
- Operation Temperature, Humidity, IP Rating, MCBF** : -20°C to +68°C / RH 95% non-condensing / IP 44 indoor model / 1 M cycles
- Control System** : All inputs are opto-coupler protected. Controlled by dry contact or grounding input. Compatible with all access control systems that provide dry contact or grounding outputs. Optional RS232/RS485/TCP IP control module is available.
- Operation** : Electronically controlled DC motor driven bi-directional system for access control in high security installations.
- Emergency Mode** : System allows free passage (manual push to rotate) in emergency mode and in case of power failure.
- Flow Rate** : Capacity of mechanism: ~2 passages/minute;
Nominal: ~2 passages/minute (recommended reference figure).
*Utilisation of different access control units can change the flow rate.
- Standard Features** : Direction and status indicators, IR height sensor
- Optional** : Weight sensor, bullet-proof glass.



*Design and specifications are subject to change without notice. *All dimensions are in millimeters (mm).